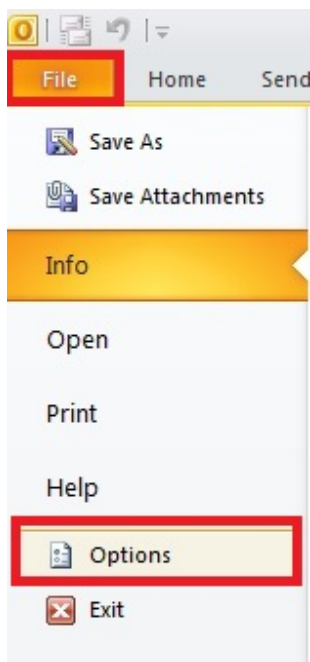
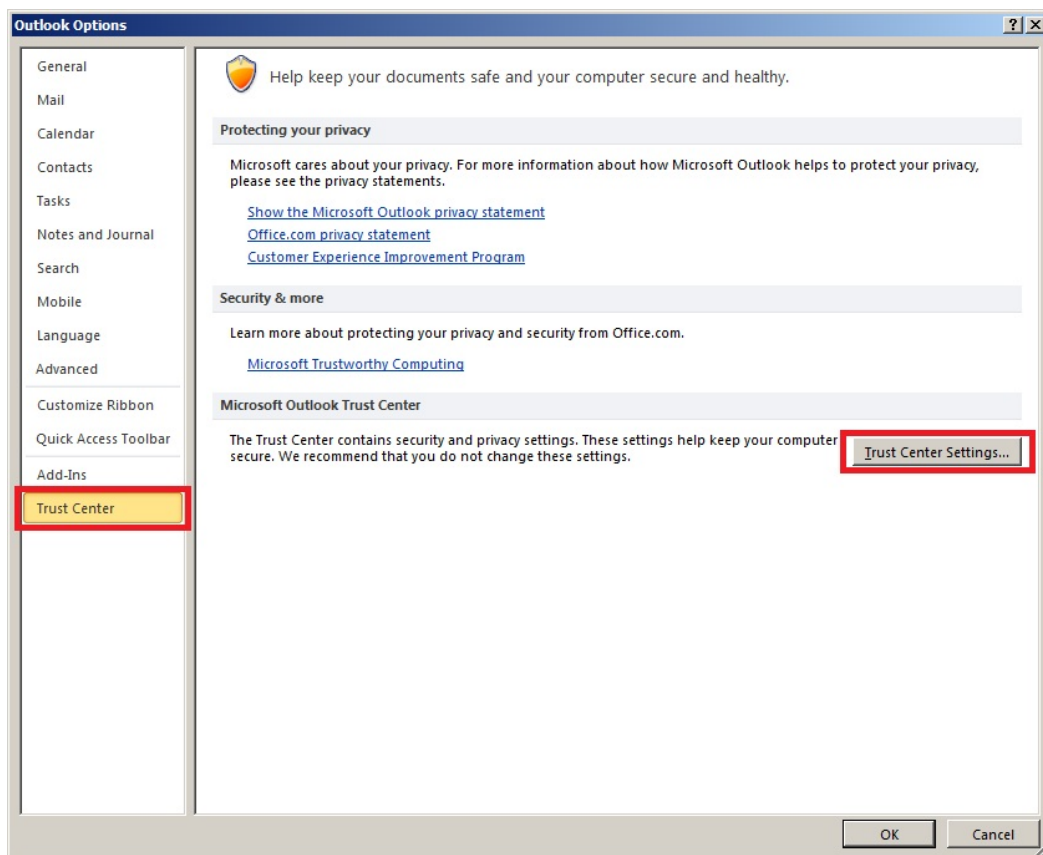


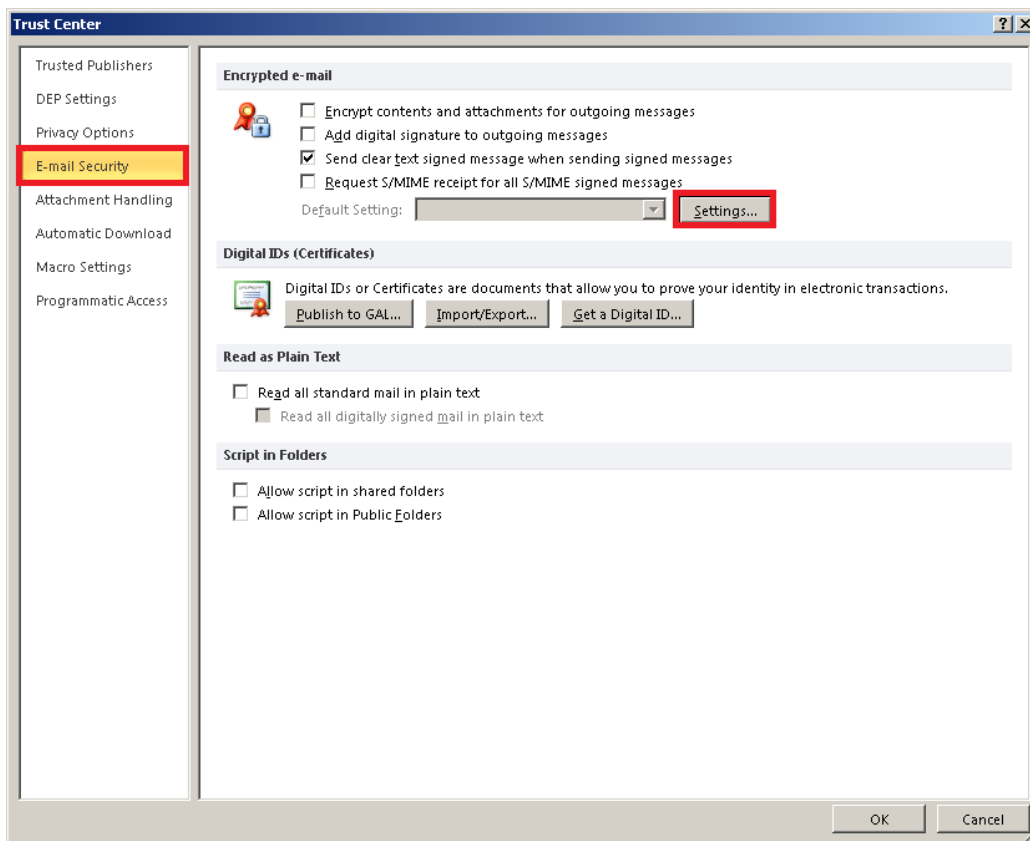
Se alege **File** din meniul principal, apoi **Options**



In fereastra noua aparuta se alege **Trust Center**, apoi se apasa butonul **Trust Center Settings**



Se alege E-mail Security si apoi se apasa butonul Settings



Se alege certificatul pentru semnare, apoi se alege certificatul pentru criptare si se apasa butonul OK



Se aplica toate setarile prin apasarea butonului OK/OK/OK...