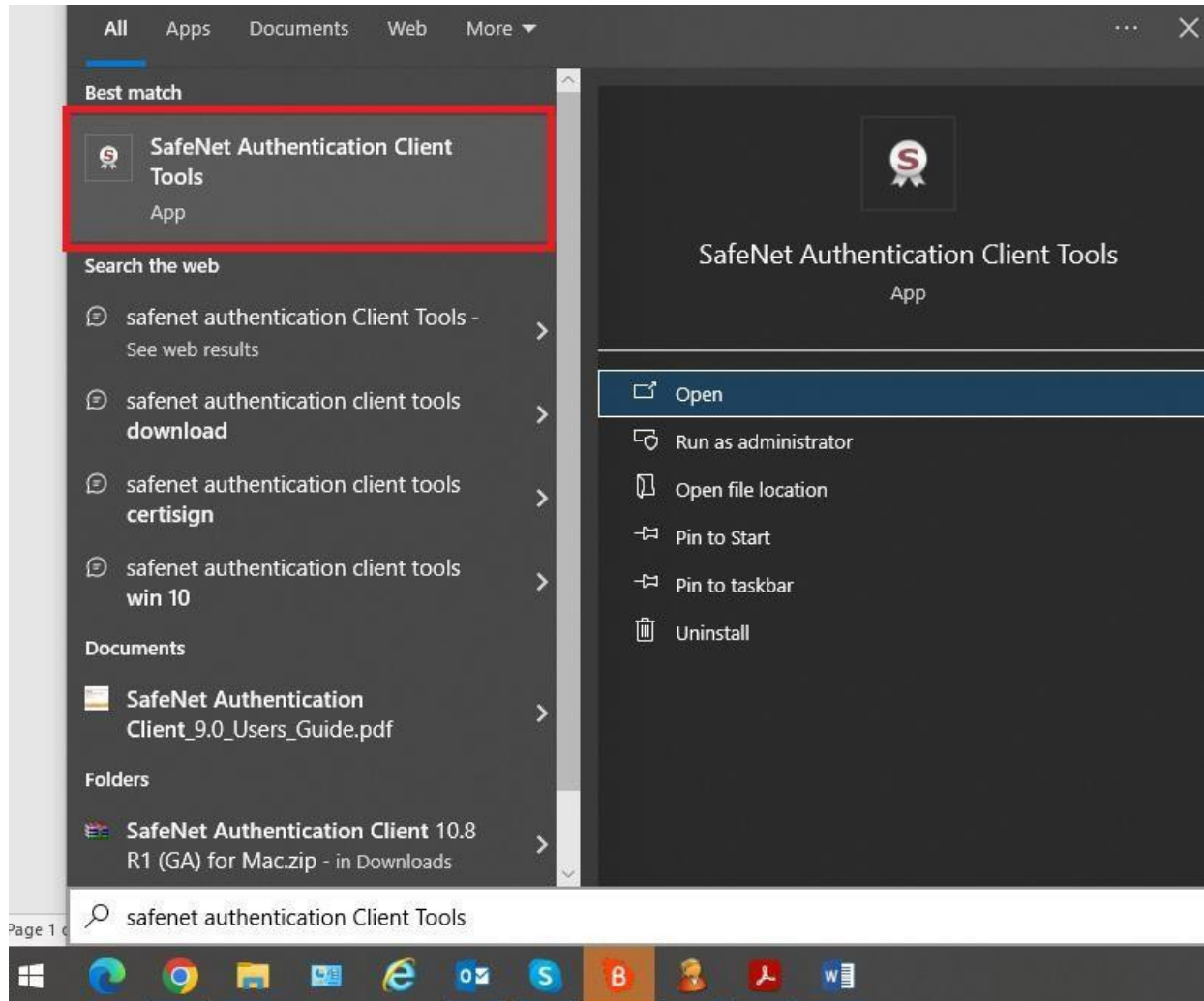


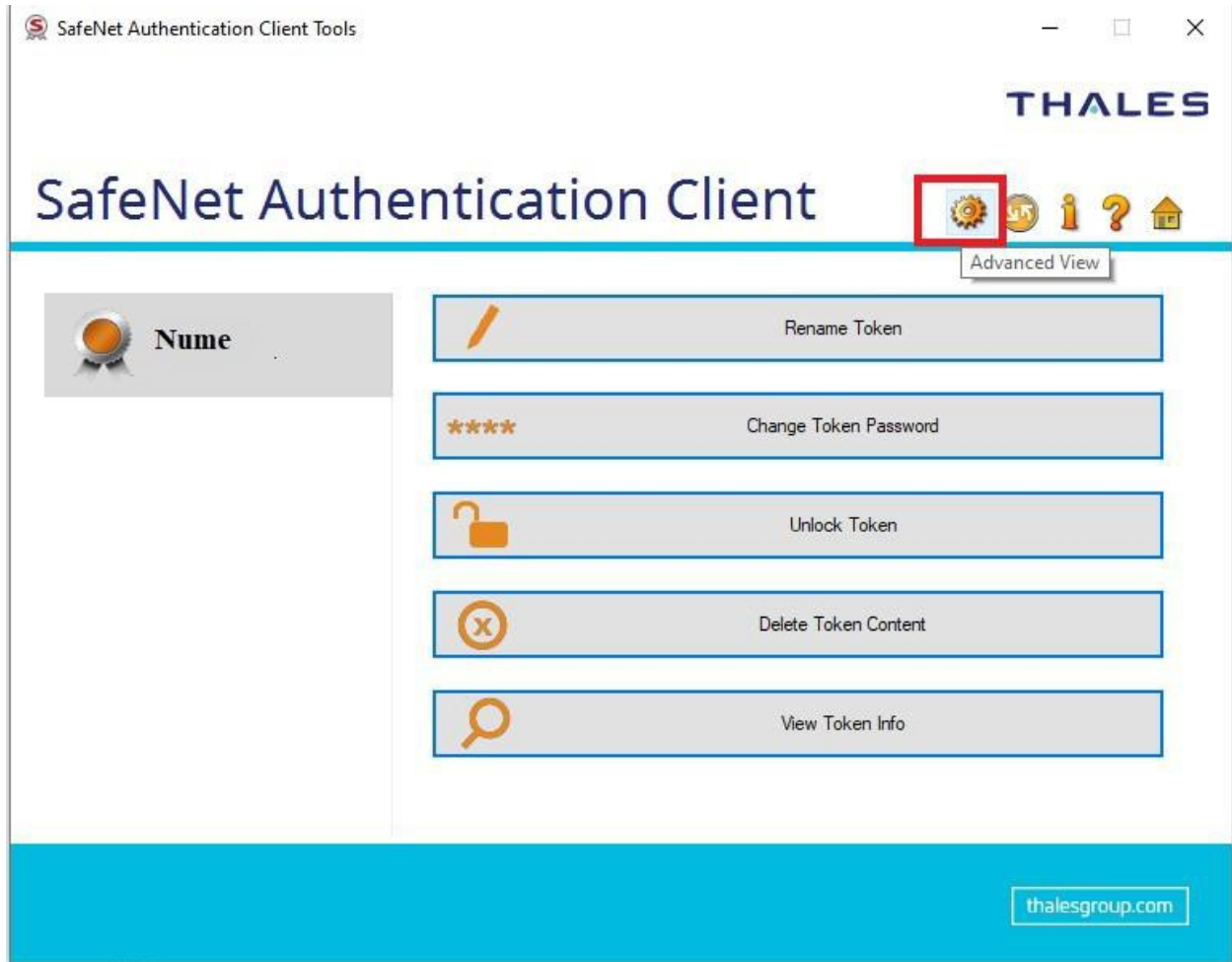
Step 1

Instructions for registration into the Customs Information System (uploading the qualified certificate)

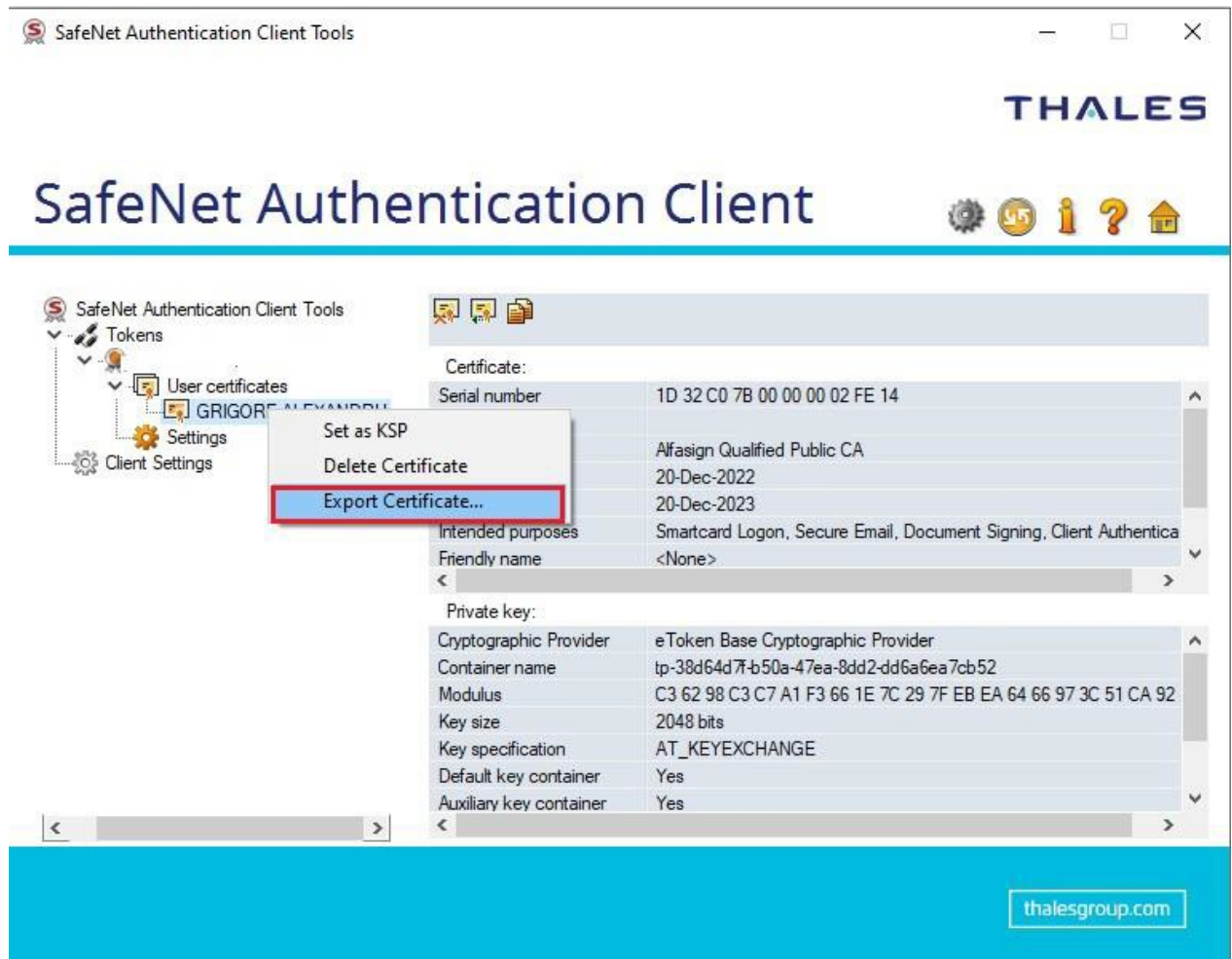
1. **Insert** the **e-Token** in the USB extension
2. In the **Start** menu of the operating system select >> **SafeNet Authentication Client Tools**



3. Click on **Advance View**



5. Click right on the certificate and click “*export certificate...*”, and save the resulting document on your PC.



6. This document should be uploaded in the “*Upload digital certificate*” section



Step 2

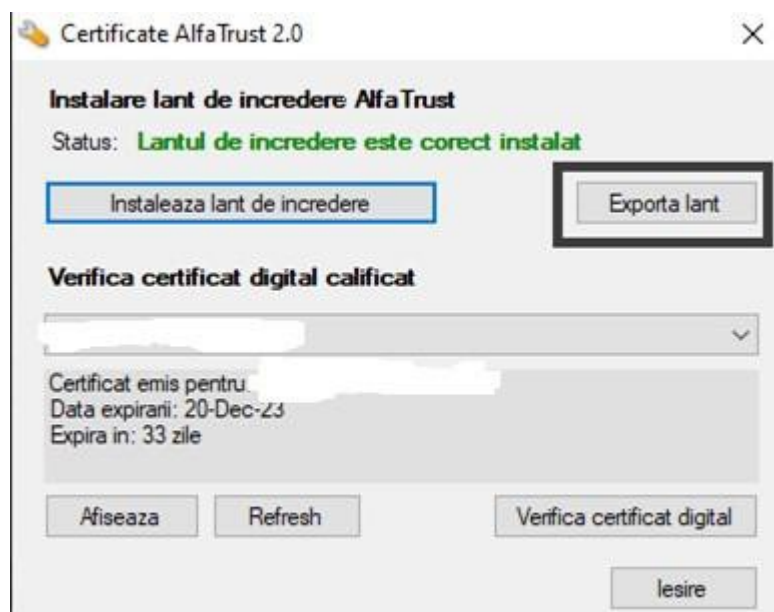
Instructions for registration into the Customs Information System (uploading the intermediate certificate)

1. Access <https://alfasign.ro/utile/instructiuni>
2. Download from point 2 – Trust chain

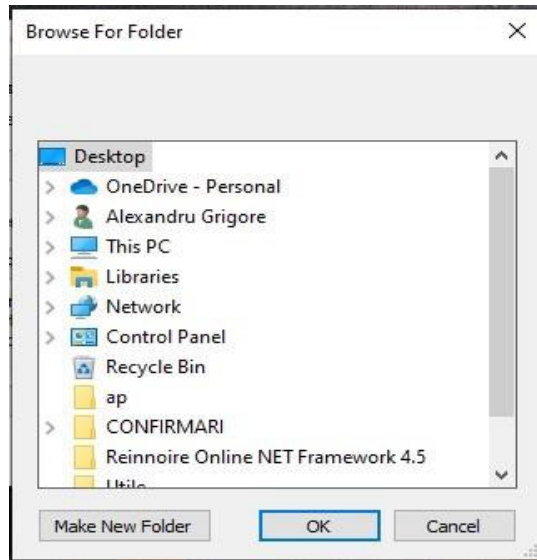
2. **Lantul de Incredere.** Aceste este necesar pentru a valida certificatul Dumneavoastra.

Descarcati lantul de incredere: **Windows 8 sau mai nou** | (rulati drepturi de administrator)

3. After downloading the “Trust chain”, you need to run it.
4. Click on “Export chain”



5. Save on the desktop



6. After you save on the desktop, you should receive the message in the picture



7. 4 documents will be generated. On the customs' website you should upload the document called: "**intermediate_certificate_sha2**"



