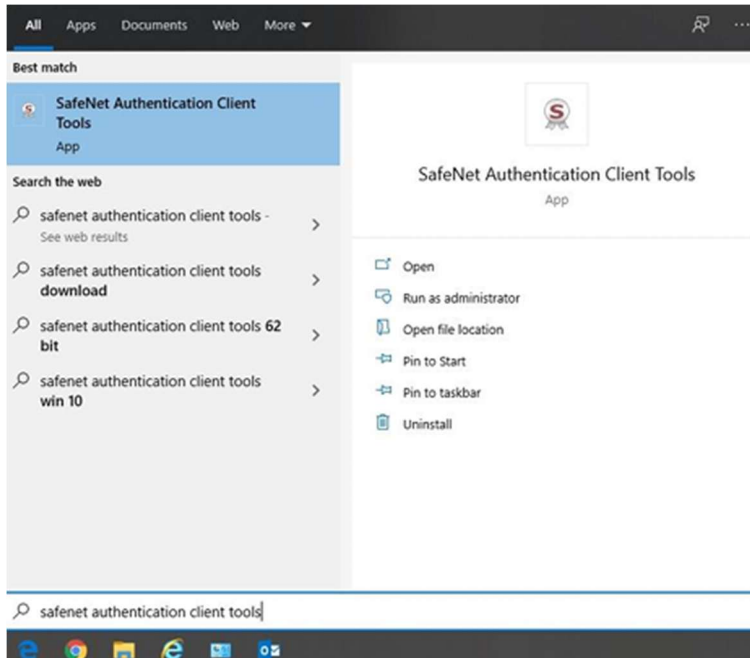
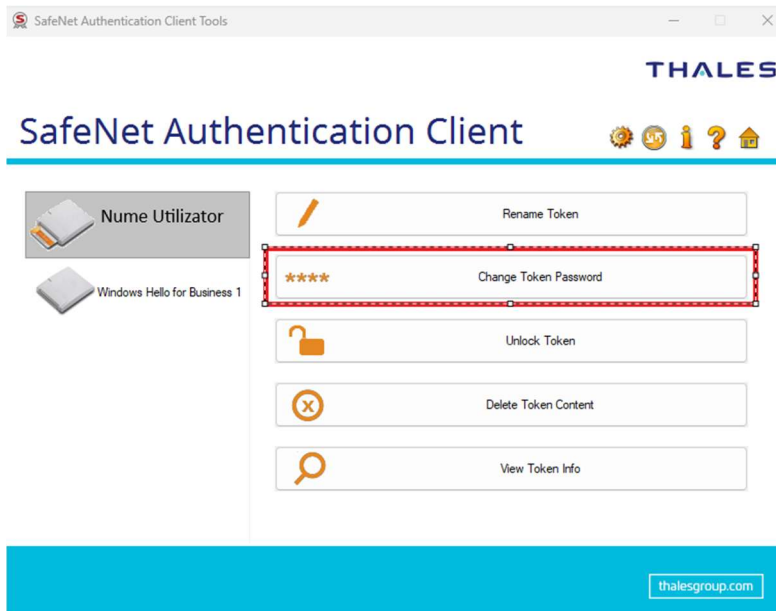


## Schimbarea parolei dispozitivului

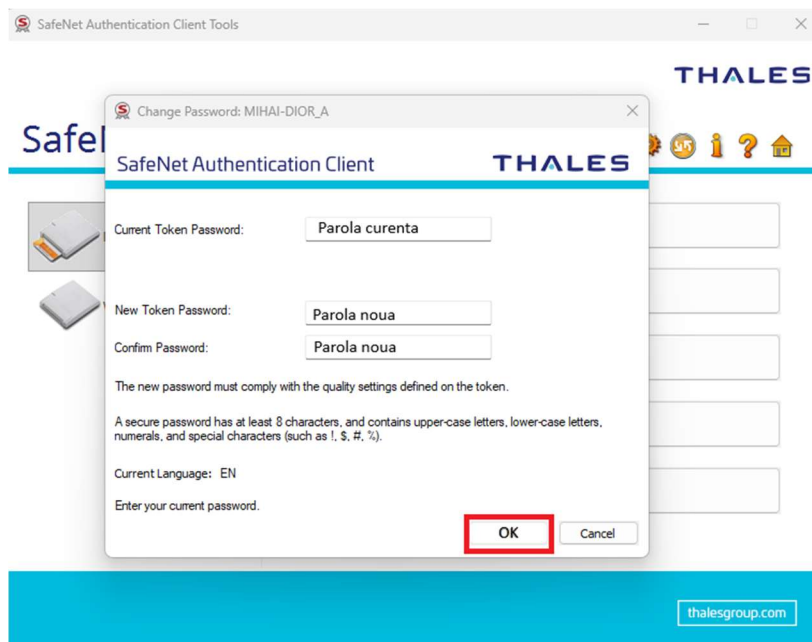
1. Se introduce dispozitivul e-Token in extensia USB;
2. Din meniul **Start** al sistemului de operare se alege >> **SafeNet Authentication Client Tools**:



3. Se apasa butonul Change Token Password:



4. Schimbarea parolei - In noua fereastra aparuta, se completeaza dupa cum urmeaza:



**Parola curenta** = parola setata de dumneavoastra initial

**Noua parola** = o parola care trebuie sa indeplineasca urmatoarele conditii:

- Minim o litera mare
- Minim o litera mica
- Minim o cifra
- Lungimea parolei : minim 8 caractere – maxim 16 caractere

**ATENTIE!! DACA UTILIZATI SISTEM DE OPERARE MAC-OS PAROLA TREBUIE SA CONTINA FIX 8 CARACTERE.**

6. Dupa indeplinirea tuturor conditiilor enumerate mai sus, se apasa butonul OK.

